

## MOODY INTERNATIONAL CERTIFICATION (M) SDN BHD

(188296-W)

**Report No.: R9283/12-1 IOI Corporation Berhad  
(Syarimo Grouping: Main Assessment)**

**Appendix Page  
1 of 25**

### Appendix A:

#### Qualifications of Lead Assessor and Assessment Team

**Mr. Augustine Loh (AL) - Lead Assessor / Team Leader / Technical Expert**  
(Palm Oil Mill, Environment, OHSAS, Social, HCV, Land Use and Supply Chain)  
– Master in Business Administration and Diploma in Maritime Studies

Mr. Augustine Loh is an IRCA Third Party Assessment (TPA) Lead Auditor and IRCA Lead Tutor for IRCA ISO 9001 and OHSAS 18001 Lead Auditor Courses as well as Tutor for RSPO Programs and Integrated Management System in Intertek Moody. He has over 25 years of fieldwork and experience in Palm based product survey, supply chain monitoring, inspection and testing. He has successfully completed the IRCA accredited Lead Auditor course in ISO 9001:2008, ISO 14001:2004, OHSAS 18001:2007, ISO 22000, RSPO Principles and Criteria Lead Assessor Course, RSPO Supply Chain Certification and International Sustainable Carbon Certification (ISCC) Lead Auditor course. He is currently the Intertek Moody RSPO Program Manager and has performed over 700 auditing days on quality, environmental and safety & health assessments in various sectors including oil palm plantations. He was the RSPO Assessment Team Leader / Member which audited several RSPO certified Plantation Management Units in 2009 to 2012. He was the CB Team Leader in the stakeholder consultation and development of the RSPO Cambodian Local Indicators.

**Mr. T. Mohan K. Thavarajah (TM) - Assessor / Technical Expert**  
(Palm Oil Mill, Environment, OHSAS)  
– Master in Technology Management, Bachelor of Engineering and Diploma in Financial Management

Mr. Mohan Thavarajah is an IRCA Lead Auditor and Lead Tutor for ISO 9001 as well as other integrated management systems (ISO 14001 and OHSAS 18001) in Intertek Moody. He holds a Masters in Management of Technology from University of Technology Malaysia (UTM) and a Bachelor of Engineering from National University of Singapore (NUS). He is an approved Lead Auditor and Lead Trainer with Intertek Moody. He has more than 25 years experience in engineering, managerial, training, and auditing and consultancy fields in the industrial sector in Singapore, Malaysia, Indonesia, Thailand, Cambodia and other regional countries. Have successfully assisted companies to establish, implement and maintain (Occupational Health Safety) OHSAS, Environmental Management System (ISO14001) and Quality Management System (ISO9001) by providing auditing, consultancy and training in the relevant areas for various manufacturing, plantation, service and, government sectors. Currently working as Intertek Moody Regional Certification Manager, he is also a lead tutor in ISO9001, ISO14001, OHSAS18001, ISO 27001 and Integrated Management System. He was part of the RSPO Assessment team which audited several RSPO certified Plantation Management Units in 2011 to 2012. He was a CB Team member in the stakeholder consultation and development of the RSPO Cambodian Local Indicators.

**Mr. Chen Fai Kok (CFK) – Assessor / Technical Expert**  
(Good Agriculture Practice, Integrated Pest Management and Social)  
– Diploma in Agriculture

Mr. Chen Fai Kok has over 30 years work experience in the plantation sector. He has held a Senior Management role in the estate field operations including GAP and IPM. He had also served as the branch Chairman of the Incorporated Society of Planters (ISP) in several branches for over 20 years. He has successfully completed training in Estate Management and the RSPO P&C MY-NI Lead Assessor course. He was part of the RSPO Assessment team which audited several RSPO certified Plantation Management Units in 2009 to 2012.

**Mr. Jumat bin Majid (JMD) – Assessor / Technical Expert**  
(Good Agriculture Practice, Integrated Pest Management and Social)  
– Advance Diploma with Distinction in Computer Networking Technology and Bachelor Degree with Honors in Social Science (International Studies)

Mr Jumat bin Majid (JMD) has over 15 years work experience in the agriculture sector. He has successfully completed the IRCA accredited Lead Auditor course in ISO 9001:2008 and RSPO P&C MY-NI Lead Assessor course. He has also successfully completed training programs in Organic Agriculture Development and had performed organic agriculture inspections and assessments for more than 6 years. He has been involved in NGO work in the areas of social impact assessments within the South East Asia region. He was part of the RSPO Assessment team which audited a RSPO certified Plantation Management Unit in 2010.

## MOODY INTERNATIONAL CERTIFICATION (M) SDN BHD

(188296-W)

**Report No.: R9283/12-1 IOI Corporation Berhad  
(Syarimo Grouping: Main Assessment)**

**Appendix Page  
2 of 25**

**Mr. William Ng Tuck Seong (NTS) – Assessor / Technical Expert**  
(Palm Oil Mill and Supply Chain)  
- Bachelor of Science (Biotechnology), MBA

Mr. William is an IRCA Third Party Assessment (TPA) Lead Auditor and IRCA Lead Tutor for IRCA ISO 9001 and ISO 22000 Food Safety Management Systems (FSMS) Lead Auditor Courses in Intertek Moody. He has over 10 years of fieldwork and experience in Agricultural and Food related auditing. He has successfully completed the IRCA accredited Lead Auditor course in ISO 9001:2008, ISO 22000, RSPO Principles and Criteria Lead Assessor Course and International Sustainable Carbon Certification (ISCC) Lead Auditor course. He is currently the Intertek Moody Food Safety Manager and has performed over 500 auditing days on quality, food safety and hygiene assessments in various sectors including oil palm plantations.



## MOODY INTERNATIONAL CERTIFICATION (M) SDN BHD

(188296-W)

**Report No.: R9283/12-1 IOI Corporation Berhad  
(Syarimo Grouping: Main Assessment)**

**Appendix Page  
3 of 25**

### Appendix B:

#### Assessment Plan (Actual)

Date	Time	Assessors and Assessment Activity				
		Assessment Team				
17/09/2012 Day 1	8.05 – 10.50 am	Flight Kuala Lumpur to Sandakan				
	10.50 am – 2.30 pm	Lunch Break & Travel to IOI Syarimo PMU				
	2.30 – 6.00 pm	Team Meeting and Discussion with PMU representatives / stakeholders				
18/09/2012 Day 2	8.00 – 9.00 am	Opening Meeting & briefing at IOI Syarimo Palm Oil Mill Office				
	9.00 am – 1.00 pm	Augustine Loh (AL)  Site assessment at Palm Oil Mill & Syarimo 3 Estate (RSPO P&C: Details as per Attachment)  <ul style="list-style-type: none"> <li>• Documentation &amp; Review of changes</li> <li>• Land ownership – boundaries, maps &amp; use</li> <li>• FFB supply &amp; quantities</li> <li>• Management Plans &amp; Reviews</li> <li>• Supply Chain Certification</li> <li>• PO storage</li> <li>• SEIA Reviews</li> <li>• Conservation Areas – including HCV</li> <li>• Internal Audits</li> <li>• Interviews with Staff &amp; Workers</li> </ul>	T. Mohan (TM)  Site assessment at Palm Oil Mill & Syarimo 3 Estate (RSPO P&C: Details as per Attachment)  <ul style="list-style-type: none"> <li>• Documentation &amp; Review of changes</li> <li>• Management Plans &amp; Reviews</li> <li>Mill Operations – Effluent Treatment</li> <li>• Disposal (waste management)</li> <li>• Mill inspections &amp; verifications</li> <li>• Boiler, workshop etc</li> <li>• Chemical usage, storage, handling, labeling</li> <li>• Recycling and disposals</li> <li>• Interviews with staff &amp; workers</li> </ul>	Chen Fai Kok (CFK)  Site assessment at Syarimo 3 Estate (RSPO P&C: Details as per Attachment)  <ul style="list-style-type: none"> <li>• Documentation &amp; Review of changes</li> <li>• Medical Surveillance – CHRA</li> <li>• Field inspections &amp; verifications</li> <li>• Including GAP</li> <li>• Including IPM</li> <li>• Replanting</li> <li>• New Plantings (P&amp;C 7)</li> <li>• Chemical usage, storage, handling &amp; labelling</li> <li>• Recycling and disposals</li> <li>• Interviews with Staff &amp; Workers</li> </ul>	Jumat bin Majid (JMD)  Site assessment at Syarimo 3 Estate (RSPO P&C: Details as per Attachment)  <ul style="list-style-type: none"> <li>• Documentation &amp; Review of the changes</li> <li>• HR – Pay &amp; Conditions</li> <li>• Worker Contracts</li> <li>• Training</li> <li>• Housing</li> <li>• Clinics &amp; Medical Surveillance</li> <li>• Worker committees</li> <li>• Gender Issues</li> <li>• Community facilities</li> <li>• Disposal of domestic wastes</li> <li>• Interviews with Staff &amp; Workers</li> </ul>	William Ng Tuck Seong (NTS)  Site assessment at Palm Oil Mill & Syarimo 3 Estate (RSPO P&C: Details as per Attachment)  <ul style="list-style-type: none"> <li>• Documentation &amp; Review of changes</li> <li>• FFB supply &amp; quantities</li> <li>• Supply Chain Certification</li> <li>• Interviews with Staff &amp; Workers</li> </ul>
	1 – 2 pm	Break				
	2 – 6 pm	Continue of Site assessment at Syarimo 3 Estate	Continue of Site assessment at Syarimo 3 Estate	Continue of Site assessment at Syarimo 3 Estate	Continue of Site assessment at Syarimo 3 Estate	Continue of Site assessment at Syarimo 3 Estate
	6 – 7 pm	Break				
	7 – 10 pm	Team meeting and discussion				

## MOODY INTERNATIONAL CERTIFICATION (M) SDN BHD

(188296-W)

**Report No.: R9283/12-1 IOI Corporation Berhad  
(Syarimo Grouping: Main Assessment)**

**Appendix Page  
4 of 25**

19/09/2012 Day 3	Time	Augustine Loh (AL)	T. Mohan (TM)	Chen Fai Kok (CFK)	Jumat bin Majid (JMD)	William Ng Tuck Seong (NTS)
	8.30 am – 1.00 pm	Site assessment at Syarimo 7 Estate (RSPO P&C: Details as per Attachment)  •Documentation & Review of changes  •Land ownership – boundaries, maps & use  •FFB supply & quantities  •Management Plans & Reviews  •Supply Chain Certification  •SEIA Reviews  •Conservation Areas – including HCV  •Internal Audits  •Interviews with Staff & Workers	Site assessment at Syarimo 7 Estate (RSPO P&C: Details as per Attachment)  •Documentation & Review of changes  •Management Plans & Reviews  •Disposal (waste management)  •Mill inspections & verifications  •Receiving FFB to PO storage  •Boiler, workshop etc  •Chemical usage, storage, handling, labeling  •Recycling and disposals  •Interviews with staff & workers	Site assessment at Syarimo 7 Estate (RSPO P&C: Details as per Attachment)  •Documentation & Review of changes  •Medical Surveillance – CHRA  •Field inspections & verifications  •Including GAP  •Including IPM  •Replanting  •New Plantings (P&C 7)  •Chemical usage & storage  •Chemical handling & labeling  •Recycling and disposals  •Interviews with Staff & Workers	Site assessment at Syarimo 7 Estate (RSPO P&C: Details as per Attachment)  •Documentation & Review of the changes  •HR – Pay & Conditions  •Worker Contracts  •Training  •Housing  •Clinics & Medical Surveillance  •Worker committees  •Gender Issues  •Community facilities  •Disposal of domestic wastes  •Interviews with Staff & Workers	Site assessment at Syarimo 7 Estate (RSPO P&C: Details as per Attachment)  •Documentation & Review of changes  •FFB supply & quantities  •Supply Chain Certification  •Interviews with Staff & Workers
	1 – 2 pm	Break				
	2 – 6 pm	Continue of Site assessment at Syarimo 7 Estate	Continue of Site assessment at Syarimo 7 Estate	Continue of Site assessment at Syarimo 7 Estate	Continue of Site assessment at Syarimo 7 Estate	Continue of Site assessment at Syarimo 7 Estate
	6 – 7 pm	Break				
	7 – 10 pm	Team meeting and discussion				



## MOODY INTERNATIONAL CERTIFICATION (M) SDN BHD

(188296-W)

**Report No.: R9283/12-1 IOI Corporation Berhad  
(Syarimo Grouping: Main Assessment)**

**Appendix Page  
5 of 25**

20/09/2012 Day 4	Time	Augustine Loh (AL)	T. Mohan (TM)	Chen Fai Kok (CFK)	Jumat bin Majid (JMD)	William Ng Tuck Seong (NTS)
	8.30 am – 1.00 pm	Site assessment at Syarimo 9 Estate (RSPO P&C: Details as per Attachment)  •Documentation & Review of changes  •Land ownership – boundaries, maps & use  •FFB supply & quantities  •Management Plans & Reviews  •Supply Chain Certification  •SEIA Reviews  •Conservation Areas – including HCV  •Internal Audits  •Interviews with Staff & Workers	Site assessment at Syarimo 9 Estate (RSPO P&C: Details as per Attachment)  •Documentation & Review of changes  •Management Plans & Reviews  •Disposal (waste management)  •Mill inspections & verifications  •Receiving FFB to PO storage  •Boiler, workshop etc  •Chemical usage, storage, handling, labeling  •Recycling and disposals  •Interviews with staff & workers	Site assessment at Syarimo 9 Estate (RSPO P&C: Details as per Attachment)  •Documentation & Review of changes  •Medical Surveillance – CHRA  •Field inspections & verifications  •Including GAP  •Including IPM  •Replanting  •New Plantings (P&C 7)  •Chemical usage & storage  •Chemical handling & labeling  •Recycling and disposals  •Interviews with Staff & Workers	Site assessment at Syarimo 9 Estate (RSPO P&C: Details as per Attachment)  •Documentation & Review of the changes  •HR – Pay & Conditions  •Worker Contracts  •Training  •Housing  •Clinics & Medical Surveillance  •Worker committees  •Gender Issues  •Community facilities  •Disposal of domestic wastes  •Interviews with Staff & Workers	Site assessment at Syarimo 9 Estate (RSPO P&C: Details as per Attachment)  •Documentation & Review of changes  •FFB supply & quantities  •Supply Chain Certification  •Interviews with Staff & Workers
	1 – 2 pm	Break				
	2 – 6 pm	Continue of Site assessment at Syarimo 9 Estate	Continue of Site assessment at Syarimo 9 Estate	Continue of Site assessment at Syarimo 9 Estate	Continue of Site assessment at Syarimo 9 Estate	Continue of Site assessment at Syarimo 9 Estate
	6 – 7 pm	Break				
	7 - 10 pm	Team meeting and discussion				

## MOODY INTERNATIONAL CERTIFICATION (M) SDN BHD

(188296-W)

**Report No.: R9283/12-1 IOI Corporation Berhad  
(Syarimo Grouping: Main Assessment)**

**Appendix Page  
6 of 25**

21/09/2012 Day 5	Time	Augustine Loh (AL)	T. Mohan (TM)	Chen Fai Kok (CFK)	Jumat bin Majid (JMD)	William Ng Tuck Seong (NTS)
	8.30 am – 1.00 pm	Site assessment at Syarimo 1 Estate (RSPO P&C: Details as per Attachment)  •Documentation & Review of changes  •Land ownership – boundaries, maps & use  •FFB supply & quantities  •Management Plans & Reviews  •Supply Chain Certification  •SEIA Reviews  •Conservation Areas – including HCV  •Internal Audits  •Interviews with Staff & Workers	Site assessment at Syarimo 1 Estate (RSPO P&C: Details as per Attachment)  •Documentation & Review of changes  •Management Plans & Reviews  •Disposal (waste management)  •Mill inspections & verifications  •Receiving FFB to PO storage  •Boiler, workshop etc  •Chemical usage, storage, handling, labeling  •Recycling and disposals  •Interviews with staff & workers	Site assessment at Syarimo 1 Estate (RSPO P&C: Details as per Attachment)  •Documentation & Review of changes  •Field inspections & verifications  •Including GAP  •Including IPM  •Replanting  •New Plantings (P&C 7)  •Chemical usage & storage  •Chemical handling & labeling  •Recycling and disposals  •Interviews with Staff & Workers	Site assessment at Syarimo 1 Estate (RSPO P&C: Details as per Attachment)  •Documentation & Review of the changes  •HR – Pay & Conditions  •Worker Contracts  •Training  •Housing  •Clinics & Medical Surveillance  •Worker committees  •Gender Issues  •Community facilities  •Disposal of domestic wastes  •Interviews with Staff & Workers	Site assessment at Syarimo 1 Estate (RSPO P&C: Details as per Attachment)  •Documentation & Review of changes  •FFB supply & quantities  •Supply Chain Certification  •Interviews with Staff & Workers
	1 – 2 pm	Break				
	2 - 3 pm	Preparation of Closing Meeting				
	3 – 4 pm	Team Meeting and Discussion with IOI Syarimo Management representatives				
	5 – 7 pm	Closing meeting at & briefing at IOI Syarimo Palm Oil Mill Office				
22/09/2012 Day 6	Time	Assessment Team				
	7.35 – 11.35am	Travel to Sandakan Airport				
	11.35 – 2.20 pm	Flight Sandakan to Kuala Lumpur				



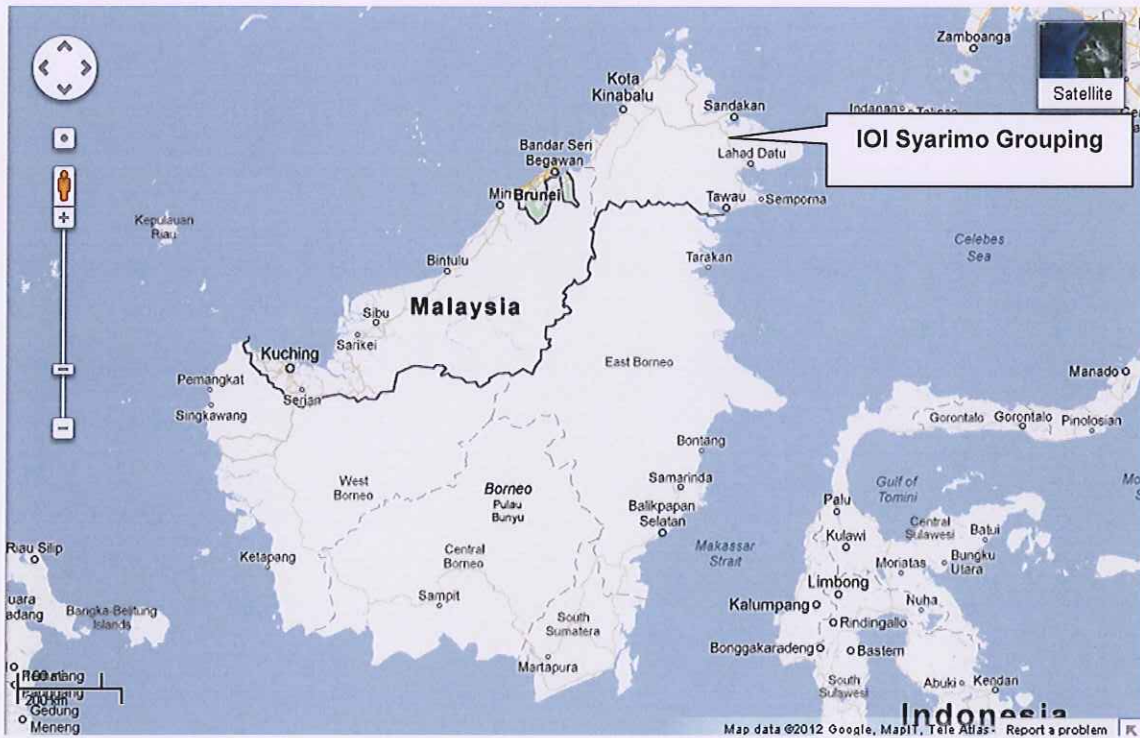
**MOODY INTERNATIONAL CERTIFICATION (M) SDN BHD**  
(188296-W)

**Report No.: R9283/12-1 IOI Corporation Berhad**  
**(Syarimo Grouping: Main Assessment)**

**Appendix Page**  
**7 of 25**

**Appendix C-1:**

**Location Map of IOI Syarimo Grouping, Kinabatangan, Sabah**  
**Scale 1: 200 km**



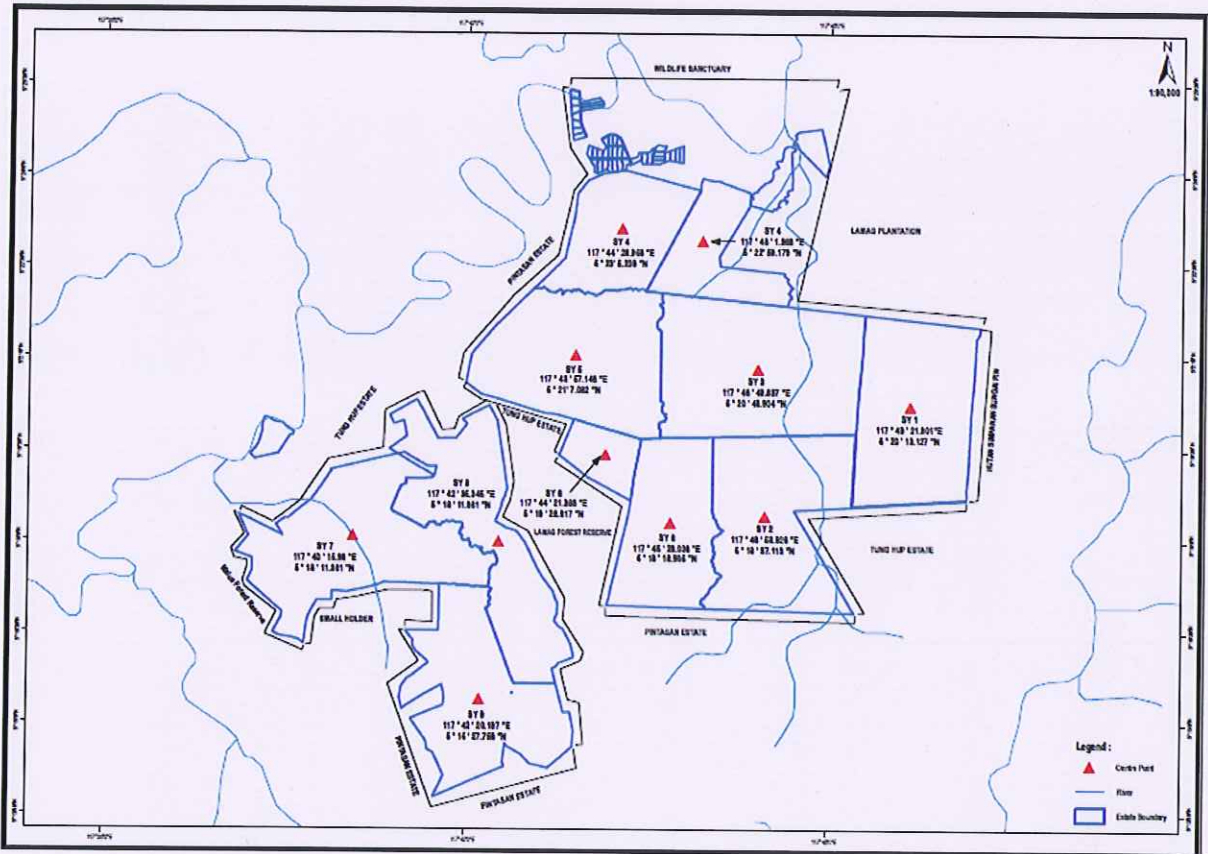
**MOODY INTERNATIONAL CERTIFICATION (M) SDN BHD**  
(188296-W)

Report No.: R9283/12-1 IOI Corporation Berhad  
(Syarimo Grouping: Main Assessment)

Appendix Page  
8 of 25

Appendix C-2:

Location Map of IOI Syarimo Grouping (Estates), Kinabatangan, Sabah



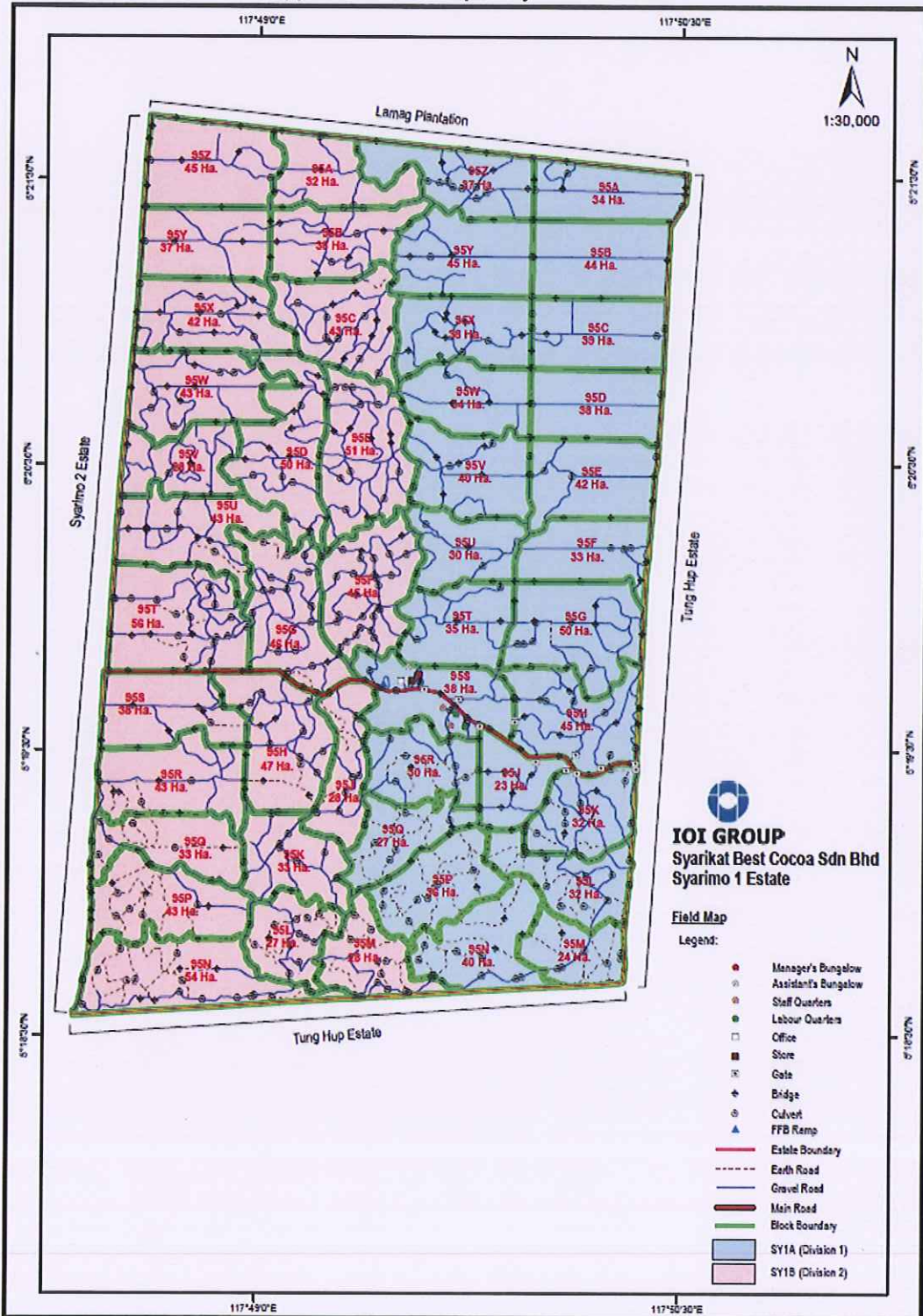


**MOODY INTERNATIONAL CERTIFICATION (M) SDN BHD**  
(188296-W)

Report No.: R9283/12-1 IOI Corporation Berhad  
(Syarimo Grouping: Main Assessment)

Appendix Page  
9 of 25

Appendix C-2-1: Map of Syarimo 1 estate

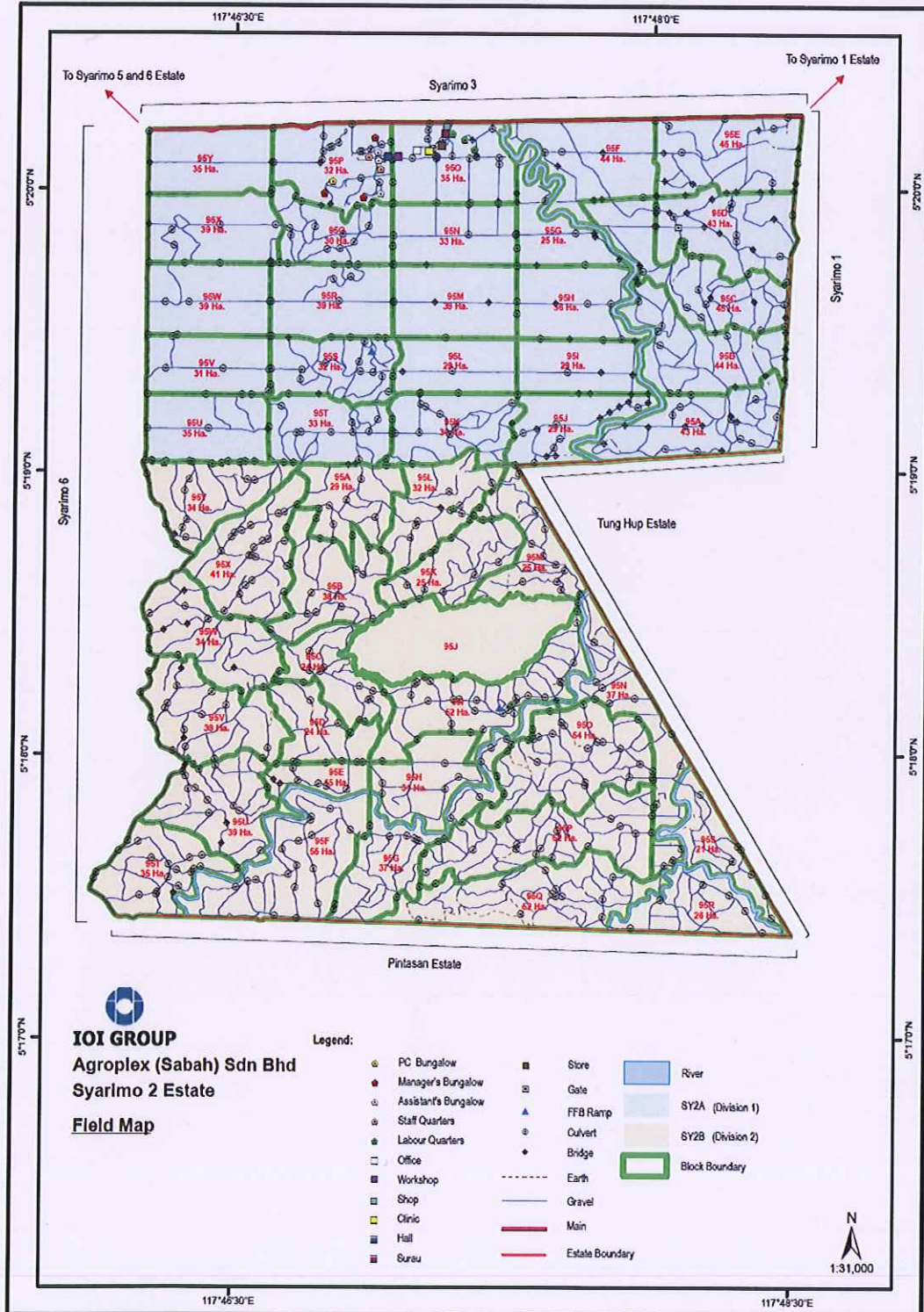


**MOODY INTERNATIONAL CERTIFICATION (M) SDN BHD**  
(188296-W)

Report No.: R9283/12-1 IOI Corporation Berhad  
(Syarimo Grouping: Main Assessment)

Appendix Page  
10 of 25

Appendix C-2-2: Map of Syarimo 2 estate



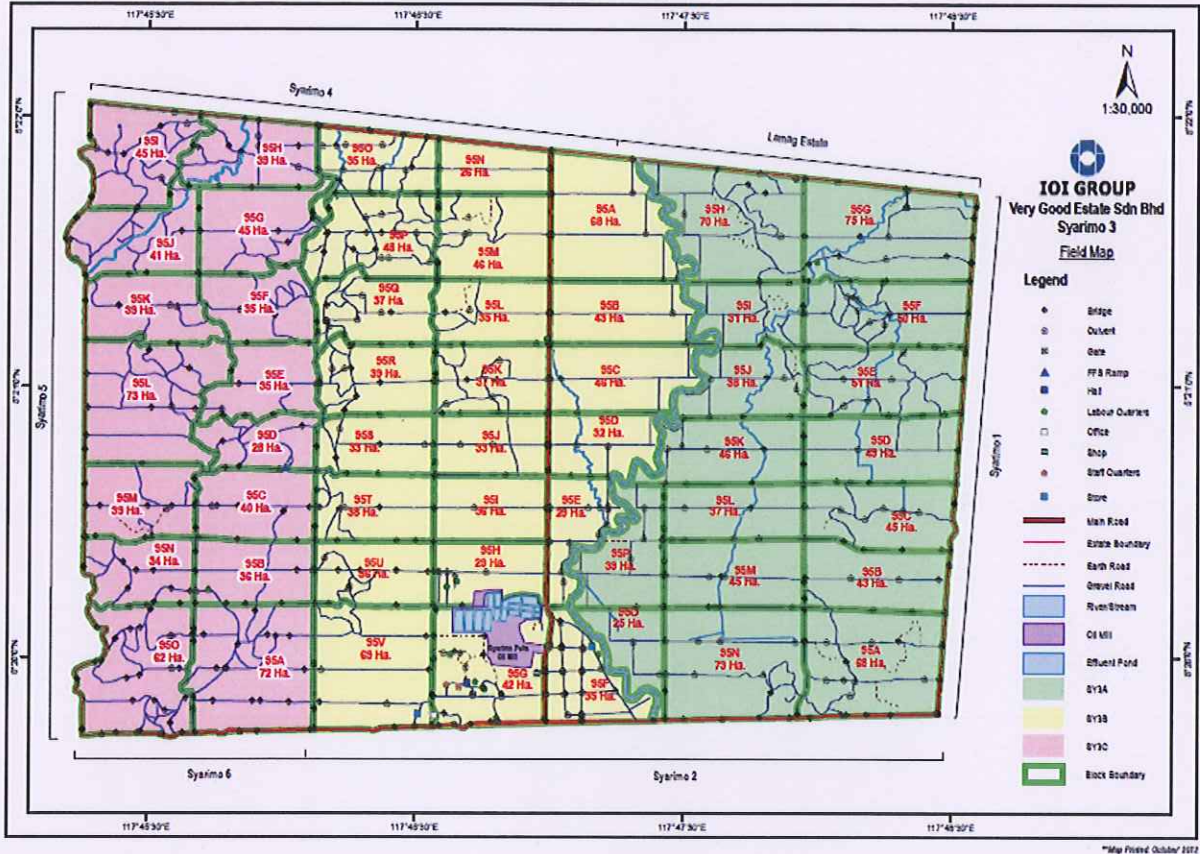


**MOODY INTERNATIONAL CERTIFICATION (M) SDN BHD**  
(188296-W)

Report No.: R9283/12-1 IOI Corporation Berhad  
(Syarimo Grouping: Main Assessment)

Appendix Page  
11 of 25

Appendix C-2-3: Map of Syarimo 3 estate

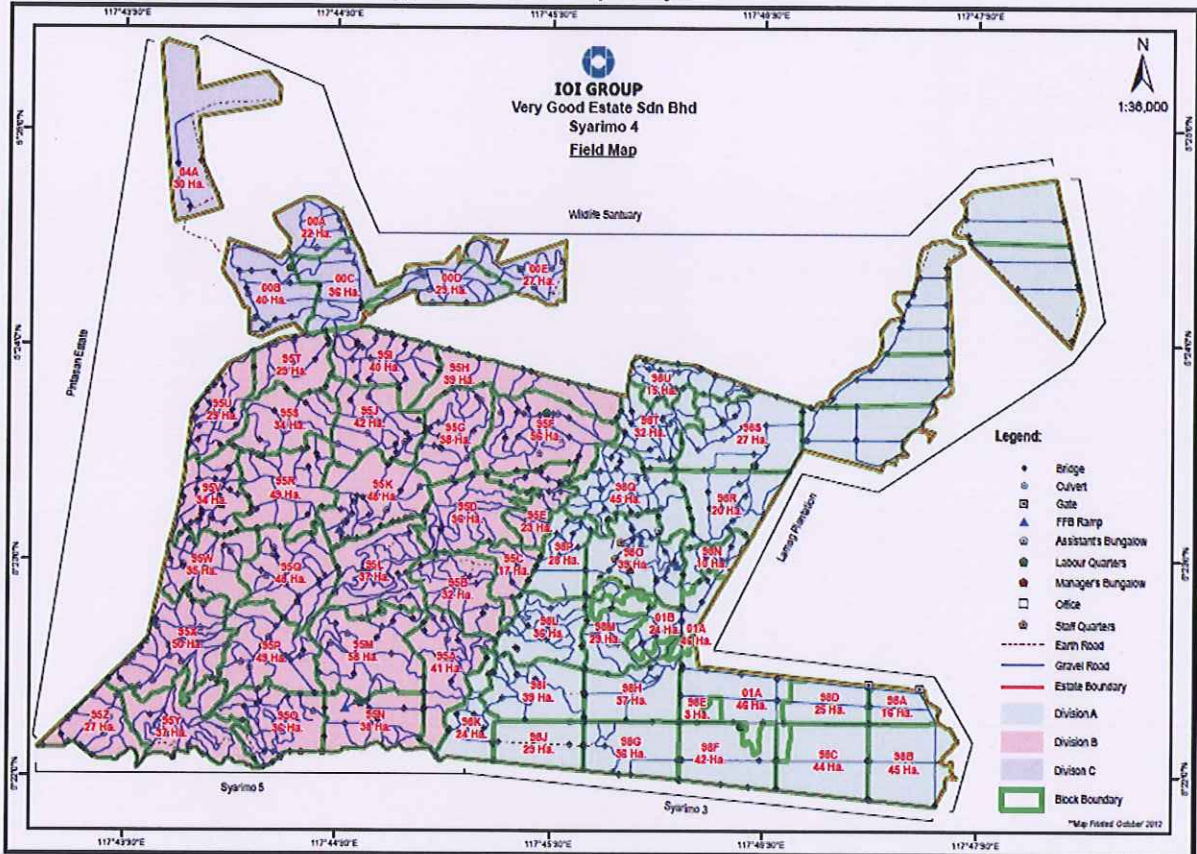


**MOODY INTERNATIONAL CERTIFICATION (M) SDN BHD**  
(188296-W)

Report No.: R9283/12-1 IOI Corporation Berhad  
(Syarimo Grouping: Main Assessment)

Appendix Page  
12 of 25

Appendix C-2-4: Map of Syarimo 4 estate



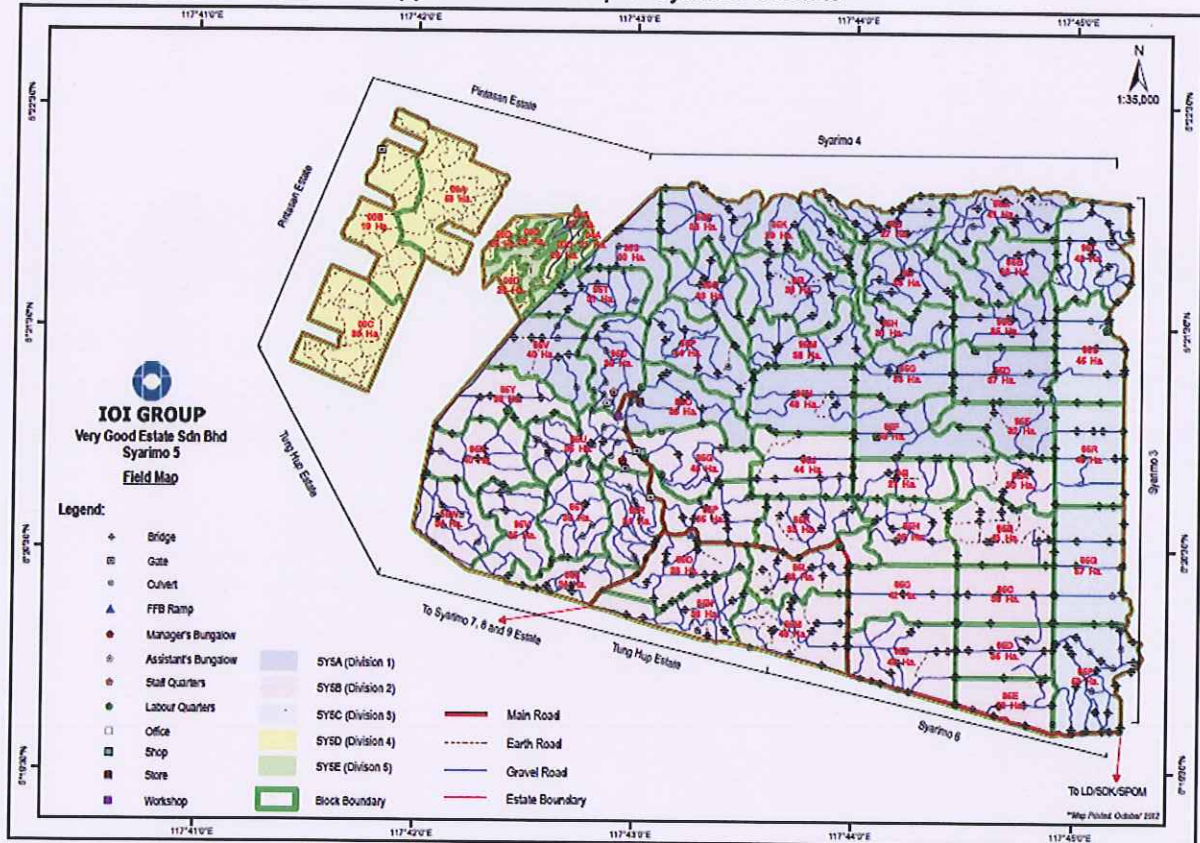


**MOODY INTERNATIONAL CERTIFICATION (M) SDN BHD**  
(188296-W)

Report No.: R9283/12-1 IOI Corporation Berhad  
(Syarimo Grouping: Main Assessment)

Appendix Page  
13 of 25

Appendix C-2-5: Map of Syarimo 5 estate

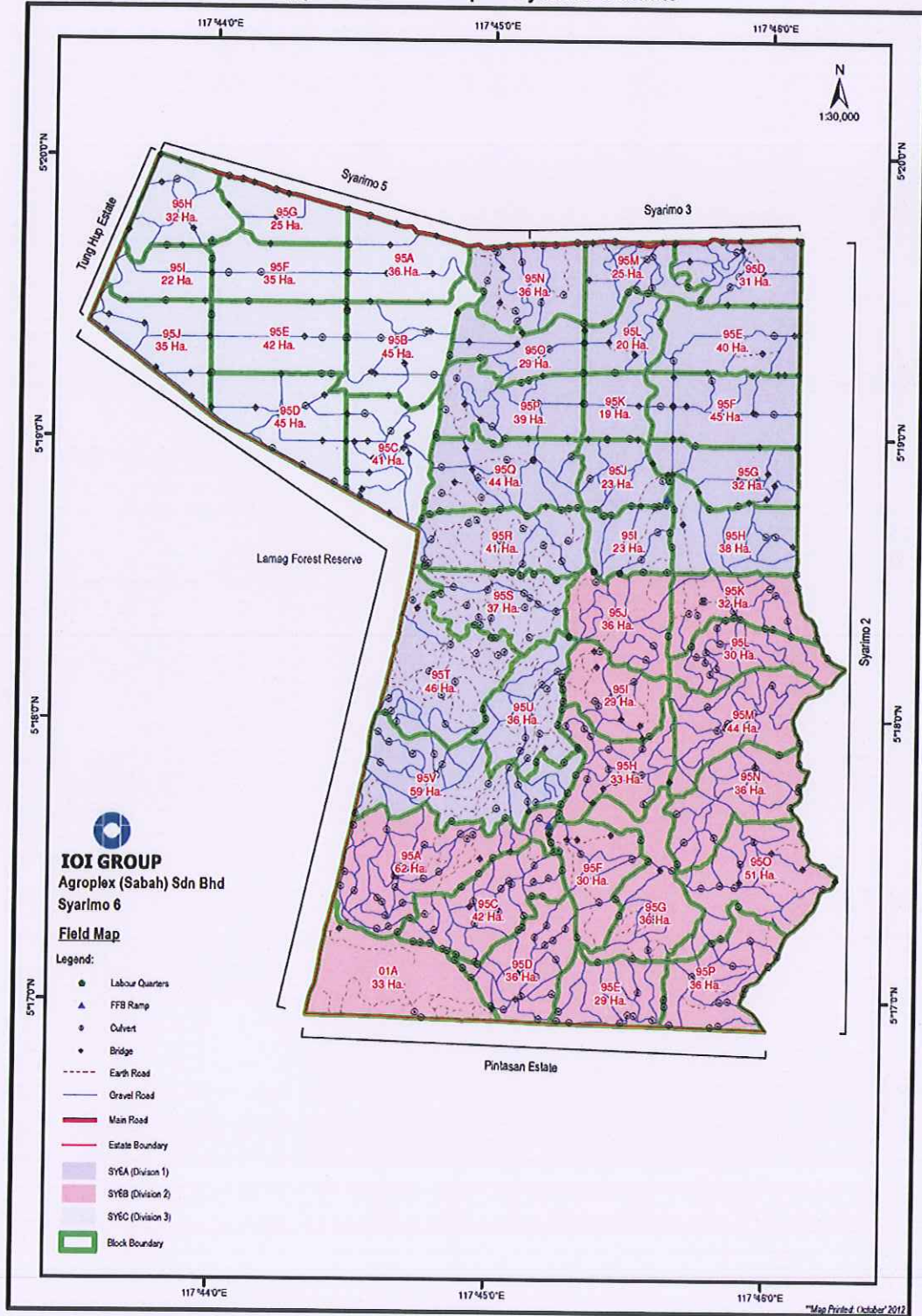


**MOODY INTERNATIONAL CERTIFICATION (M) SDN BHD**  
(188296-W)

Report No.: R9283/12-1 IOI Corporation Berhad  
(Syarimo Grouping: Main Assessment)

Appendix Page  
14 of 25

Appendix C-2-6: Map of Syarimo 6 estate



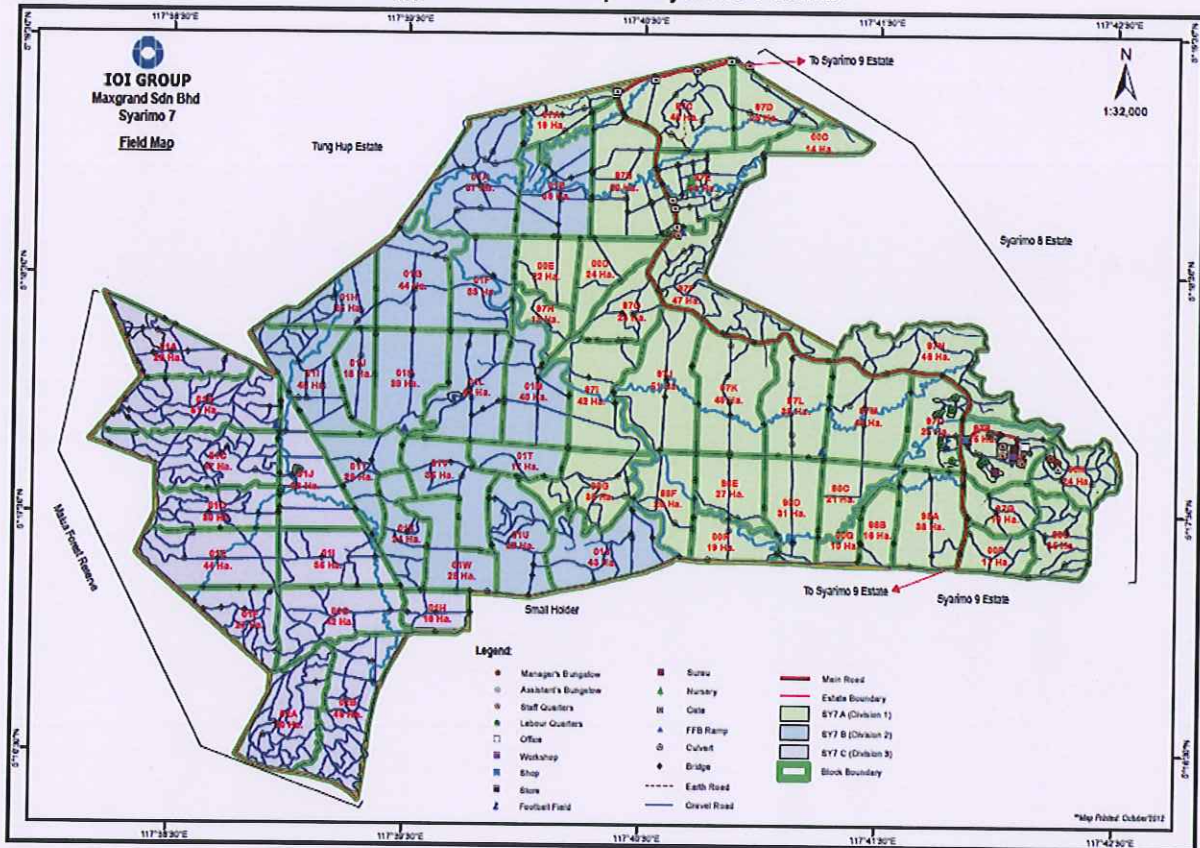


**MOODY INTERNATIONAL CERTIFICATION (M) SDN BHD**  
(188296-W)

Report No.: R9283/12-1 IOI Corporation Berhad  
(Syarimo Grouping: Main Assessment)

Appendix Page  
15 of 25

Appendix C-2-7: Map of Syarimo 7 estate

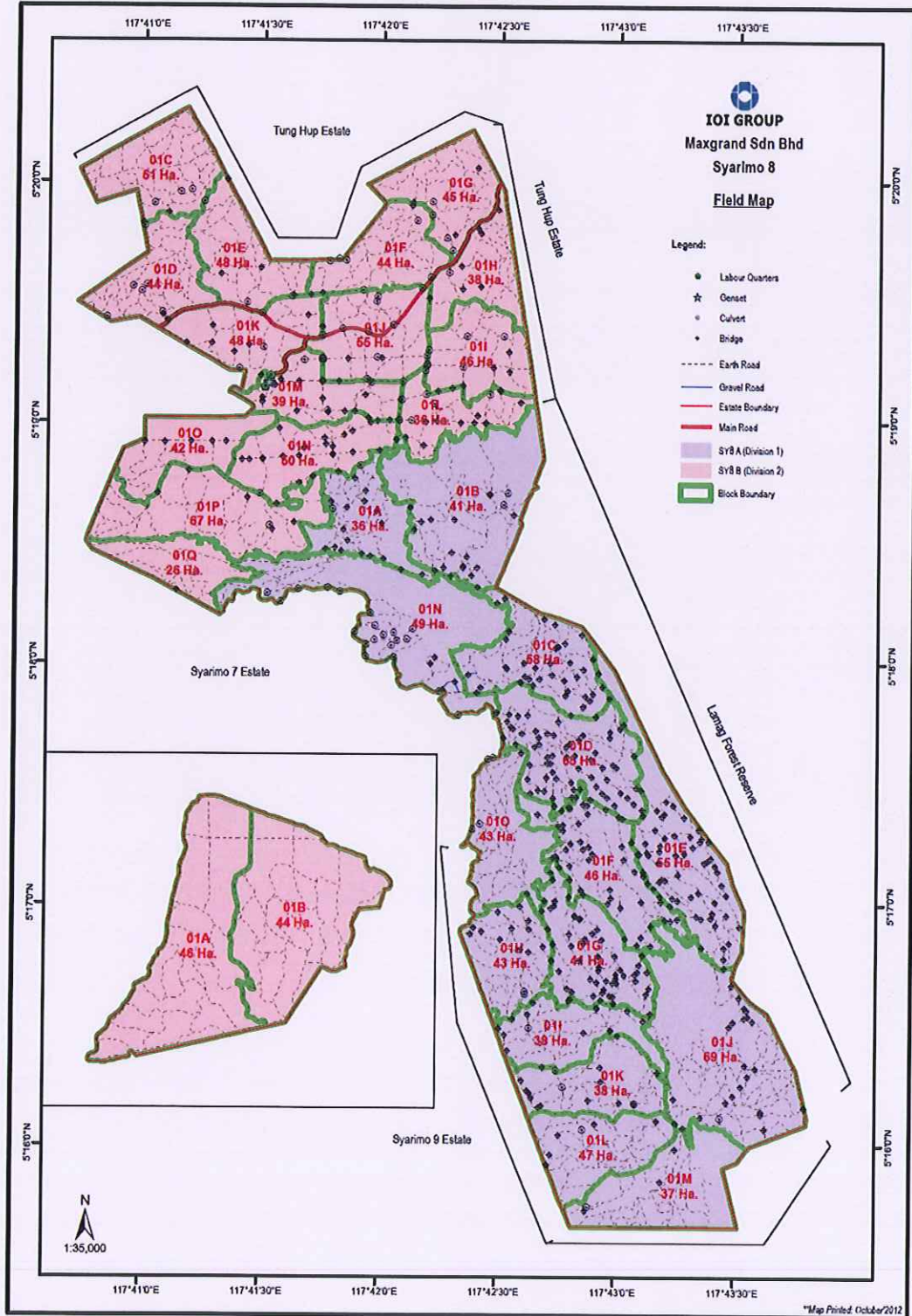


# MOODY INTERNATIONAL CERTIFICATION (M) SDN BHD (188296-W)

Report No.: R9283/12-1 IOI Corporation Berhad  
(Syarimo Grouping: Main Assessment)

Appendix Page  
16 of 25

Appendix C-2-8: Map of Syarimo 8 estate



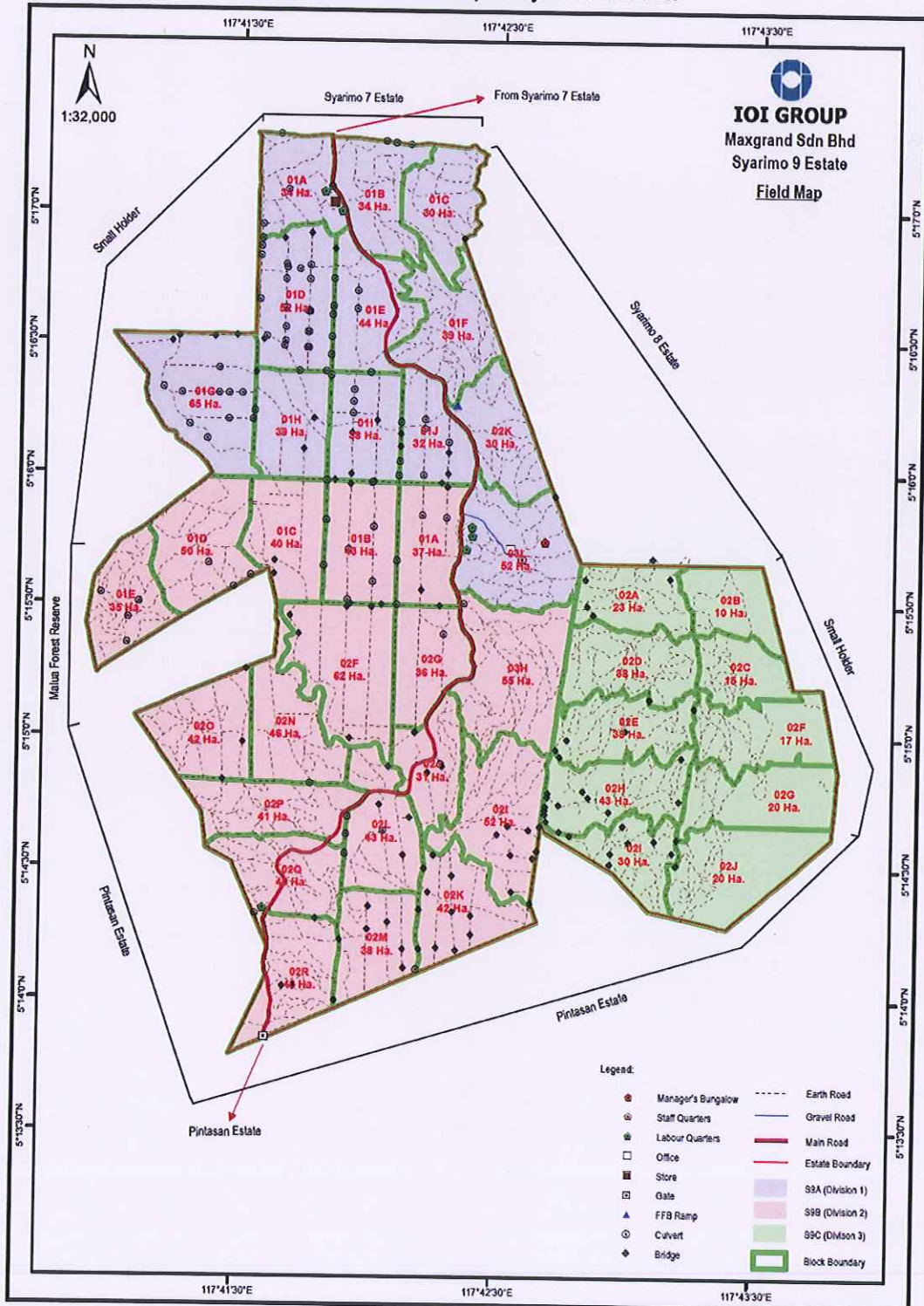


**MOODY INTERNATIONAL CERTIFICATION (M) SDN BHD**  
(188296-W)

Report No.: R9283/12-1 IOI Corporation Berhad  
(Syarimo Grouping: Main Assessment)

Appendix Page  
17 of 25

Appendix C-2-9: Map of Syarimo 9 estate





**MOODY INTERNATIONAL CERTIFICATION (M) SDN BHD**  
(188296-W)

**Report No.: R9283/12-1 IOI Corporation Berhad**  
**(Syarimo Grouping: Main Assessment)**

**Appendix Page**  
**18 of 25**

**Appendix D:**

**Photographs of Assessment findings at Syarimo PMU**



Notice boards at Syarimo 1 estate



Verification of boundary and GPS coordinates at Syarimo 4 estate



Boundary stone and IOI erected boundary pole at Syarimo estate



Verification of boundary stone markings



Erected signage at Syarimo 7 estate



Forestry Dept signage at Malua Forest Reserve bordering with Syarimo 7 estate.





HCV signage at hill side of Syarimo 9 estate



Buffer zone signage at river passing through Syarimo 3 estate



Buffer zone signage at river passing through Syarimo 3 estate



Forestry Dept signage at Malua Forest Reserve bordering with Syarimo 7 estate.



Buffer zone signage at river passing through Syarimo 7 estate



Burial site maintained at Syarimo estate.



**MOODY INTERNATIONAL CERTIFICATION (M) SDN BHD**  
(188296-W)

**Report No.: R9283/12-1 IOI Corporation Berhad**  
**(Syarimo Grouping: Main Assessment)**

**Appendix Page**  
**20 of 25**



Landfill site for domestic waste at Syarimo estate.



Recycling bins and signages at Syarimo estate.



Creche located at Syarimo 7 estate.



Humana school located at Syarimo 7 estate.



Buffalo used in the field during manuring work.



PPE worn by field workers during manuring work.



**MOODY INTERNATIONAL CERTIFICATION (M) SDN BHD**  
(188296-W)

**Report No.: R9283/12-1 IOI Corporation Berhad**  
**(Syarimo Grouping: Main Assessment)**

**Appendix Page**  
**21 of 25**



Warning signages displayed during spraying work at field.



Bunding provided for the diesel tank.



Hydro K tubes used at the effluent ponds at POM.



Monitoring of water table at peat land located at Syarimo 1 estate.



Conservation notices displayed at Syarimo 7 estate.



Verification of documents and records maintained at the estates.



## MOODY INTERNATIONAL CERTIFICATION (M) SDN BHD

(188296-W)

**Report No.: R9283/12-1 IOI Corporation Berhad  
(Syarimo Grouping: Main Assessment)**

**Appendix Page  
22 of 25**

### Appendix E:

#### Stakeholders' feedback, PMU response and MICM verification / comments

Stakeholders' Feedback	PMU Response	MICM verification / comments
<b>Government Agencies</b>		
Department of Forestry Sabah (YB. Datuk Sam Mannan) via letter of 28 August 2012: <ul style="list-style-type: none"> <li>• Informed MICM that IOI Corporation Berhad has no conflict with the Department in terms of environmental, biodiversity and social requirements of the standards.</li> <li>• IOI Corporation Berhad has shown their full commitment to ensure the oil palm standards are practiced in accordance to the RSPO Principle and Criteria</li> </ul>	Ongoing consultation with Department of Forestry will be maintained.	Verified during on-site assessment at Syarimo PMU that no issues were existed with the Forestry Department. IOI Syarimo is participating in the joint conservation programmes at the Malua Forest Reserve.
Department of Immigration Malaysia (Mr Haniff bin Omar) via email of 6 September 2012 <ul style="list-style-type: none"> <li>• Informed no current issue</li> </ul>	Ongoing consultation with Department of Immigration will be maintained.	Verified during on-site assessment at Syarimo PMU that Immigration Department regulations has been complied with.
Department of Orang Asli Affairs Malaysia (Ms Fairus binti Yahaya) via email of 29 August 2012 <ul style="list-style-type: none"> <li>• Informed no current issue.</li> </ul>	Ongoing consultation with Department of Orang Asli Affairs (Indegenious Peope) will be maintained.	Verified during on-site assessment at Syarimo PMU that there are no existing Indegenious people issues at region.
Malaysian Palm Oil Board (Tn. Hj. Wahid Omar) via email on 29 August 2012: stated that <ul style="list-style-type: none"> <li>• IOI Corporation Berhad has adhered to all MPOB's guides and regulations.</li> </ul>	Ongoing consultation with MPOB will be maintained.	Verified during on-site assessment at Syarimo PMU that MPOB requirements and reporting has been adhered to.
<b>Non-Governmental Organizations</b>		
Malaysian Nature Society (Mr Kalaimani Supramaniam) via email of 25 August 2012 mentioned concern on: <ul style="list-style-type: none"> <li>• environment awareness programme for school children and local communities at Kinabatangan area</li> <li>• the oil palm plantation should not give negative impact to the local environment area</li> <li>• IOI would support Corporate Social Responsibility (CSR) programmes</li> </ul>	Ongoing consultation with MNS will be maintained. <ul style="list-style-type: none"> <li>• Ongoing programs for Environmental awareness will continue to be promoted by IOI Group and in the Syarimo estates with local communities and schools.</li> <li>• IOI Group CSR programmes are highlighted and can be publicly viewed via website.</li> </ul>	Verified during on-site assessment at Syarimo PMU that most of the environmental indicators in the RSPO P&C are complied with.  Minor Noncompliances detected were highlighted in part 1 of report under section 3.2 and corrective action plans from Syarimo PMU were found acceptable. Effectiveness of implementation will be verified during next surveillance.
Global Environment Center (Mr Balu Perumal), 28 August 2012: <ul style="list-style-type: none"> <li>• Informed no current issue</li> </ul>	Ongoing consultation with GEC will be maintained.	Covered as per above.
Borneo Child Care – Humana <ul style="list-style-type: none"> <li>• Informed no current issue</li> </ul>	Ongoing consultation with Borneo Child Care will be maintained.	Verified during on-site assessment at Syarimo PMU that no issues exist with regards to the Humana schools.



**MOODY INTERNATIONAL CERTIFICATION (M) SDN BHD**  
(188296-W)

**Report No.: R9283/12-1 IOI Corporation Berhad  
(Syarimo Grouping: Main Assessment)**

**Appendix Page  
23 of 25**

<b>Local Communities</b>		
En. Asmadi – UMW (East Malaysia) Sdn. Bhd- Contractor for Road Maintenance & Works, mentioned on the delay of payments for services provided.	Ongoing communication and consultation will be improved to address concerns on the prompt checking and issue of payments as per agreed contracts with contractors.	Verified during on-site assessment at Syarimo PMU that most of the the Social indicators in the RSPO P&C are complied with. Minor Noncompliances detected were highlighted in part 1 of report under section 3.2 and corrective action plans from Syarimo PMU were found acceptable. Effectiveness of implementation will be verified during next surveillance.
<b>Other Interested parties</b>		
Nil	Nil	Nil

## MOODY INTERNATIONAL CERTIFICATION (M) SDN BHD

(188296-W)

**Report No.: R9283/12-1 IOI Corporation Berhad  
(Syarimo Grouping: Main Assessment)**

Appendix Page  
24 of 25

### Appendix F:

Time Bound Plan as submitted by IOI Corporation Berhad (updated for 2011/2012)

Financial Year	PMU	Main Assessment	Certification Status	Surveillance Assessment	Current Status
<b>PLANTATIONS - MALAYSIA</b>					
2011 / 2012	Pamol Sabah POM	Done in May 2008	Certified in Feb 2009	ASA-01 done in Nov 2009 ASA-02 done in Jan 2011 ASA-03 done in Feb 2012	ASA-04 planned in Jan 2013
	Sakilan POM	Done in Nov 2008	Certified in March 2010	ASA-01 done in Jan 2011 ASA-02 done in Feb 2012	ASA-03 planned in Feb 2013
	Pamol Kluang POM	Done in March 2009	Certified in March 2010	ASA-01 done in March 2011 ASA-02 done in Feb 2012	ASA-03 planned in March 2013
	Gomali POM	Done in August 2009	Certified in August 2010	ASA-01 done in August 2011	ASA-02 planned in August 2012
	Baturong POM	Done in Sept 2009	Certified in October 2010	ASA-01 done in October 2011	ASA-02 planned in October 2012
	Bukit Leelau POM	Done in April 2010	Certified in November 2010	ASA-01 done in Nov 2011	ASA-02 planned in Nov 2012
	Mayvin POM	Done in August 2010	Certified in December 2010	ASA-01 done in July 2011	ASA-02 planned in July 2012
	Pukin POM	Done in Dec 2010	Certified in June 2012	ASA-01 planned in Nov 2012	ASA-01 planned in November 2012
	Leepang POM	Audited in Aug 2012	-	-	Pending certification approval.
	Syarimo POM	Audited in Sept 2012	-	-	Pending certification approval.
	Ladang Sabah POM	Audited in Oct 2012	-	-	Pending certification approval.
	Morisem POM	Planned – Jan' 2013	-	-	-
	IOI-Pelita	Planned – June 2014	-	-	Mediation process is on-going between IOI and local community on land dispute issue.
<b>PLANTATIONS - INDONESIA</b>					
2011 / 2012	PT SKS	Planned – Dec 2016	-	-	-
	PT BNS	Planned – Dec 2016	-	-	-



## MOODY INTERNATIONAL CERTIFICATION (M) SDN BHD

(188296-W)

**Report No.: R9283/12-1 IOI Corporation Berhad  
(Syarimo Grouping: Main Assessment)**

Appendix Page  
25 of 25

**Appendix G:  
MICM - RSPO Certificate details for Syarimo Grouping**

Certificate No:	RSPO 928388
Issue date:	(RSPO Approval date)
Expiry date:	(5 years)
Organization	IOI Corporation Berhad
Address of Head Office:	Level 8, Two IOI Square, IOI Resort, 62502 Putrajaya, Malaysia
RSPO Membership No:	2-0002-04-000-00
Plantation Management Unit:	Syarimo Grouping
Address of POM:	KM 23, Jalan Kinabatangan, Kinabatangan, Sabah, Malaysia
Standards:	RSPO Principles and Criteria (October 2007) Malaysian National Interpretation (MY- NI, November 2010) and RSPO Supply Chain Certification Standards (November 2011) for the Palm Oil Mill
Certification scope:	Production of Crude Palm Oil and Palm Kernels
Supply Chain model for CPO & PK:	Segregated (SG)

Details of the Mill and Supply bases covered by this certificate and the tonnage approved are:

Name	Address	GPS Reference	
		Latitude	Longitude
Syarimo Palm Oil Mill (Capacity: 90 MT/hour)	KM23, Jalan Kinabatangan, Sg. Pin, Kinabatangan, Sabah	05°20.014'N	117°46.875'E
1. Syarimo 1 estate	Sg. Pin, Kinabatangan, Sabah	05°19.742'N	117°49. 510'E
2. Syarimo 2 estate	Sg. Pin, Kinabatangan, Sabah	05°19.642'N	117°47'.077'E
3. Syarimo 3 estate	Sg. Pin, Kinabatangan, Sabah	05°19.769'N	117°46.561'E
4. Syarimo 4 estate	Sg. Pin, Kinabatangan, Sabah	05°23.041'N	117°45.877'E
5. Syarimo 5 estate	Sg. Pin, Kinabatangan, Sabah	05°21.065'N	117°42.938'E
6. Syarimo 6 estate	Sg. Pin, Kinabatangan, Sabah	05°18.919'N	117°45.707'E
7. Syarimo 7 estate	Sg. Latangan, Kinabatangan, Sabah	05°17.792'N	117°42.124'E
8. Syarimo 8 estate	Sg. Latangan, Kinabatangan, Sabah	05°19.235'N	117°41.489'E
9. Syarimo 9 estate	Sg. Latangan, Kinabatangan, Sabah	05°15.714'N	117°42.546'E

The annual certifiable tonnages of CPO and PK production by Syarimo Grouping from the supply base/suppliers as assessed and verified during the current Main Assessment (based on 2011/12 data) are detailed as follows:

POM	FY2011/12	FY2012/13 - projected
Total FFB Processed (MT)	393,747.49	409,496.80
Total CPO Production (MT)	81,741.98	85,175.33
Total PK Production (MT)	18,939.25	20,065.34
SCCS Model for POM	SG	SG

---End of Report---